



PushShare Receiving Unit



User Manual

Manual Version PSRV1.1

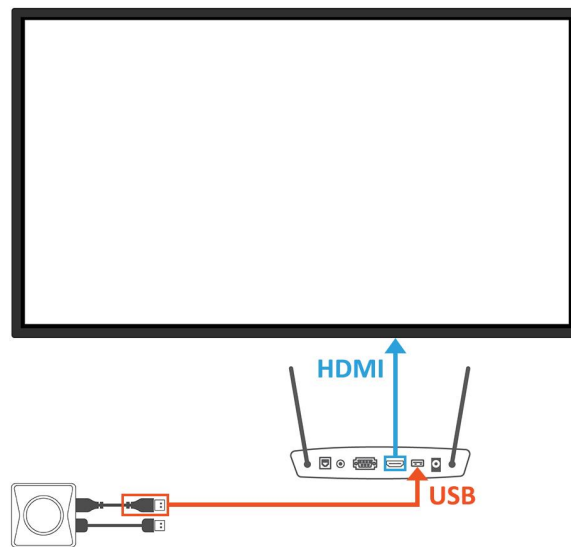
Safety Instructions



- Read the instruction manual carefully before use.
- Use only parts or accessories (especially power adapters) recommended by the manufacturer. Unapproved parts may be hazardous and cause injuries to the product or users, and will void the warranty.
- Before powering on the product, make sure all the connectors and cables are firmly inserted.
- Please keep the product away from any heat sources.
- Do not attempt to repair this product yourself without permission from the manufacturer. Improper disassembly of the product may invalidate the warranty and lead to possible danger.
- If you have a problem that cannot be solved using the "Troubleshooting" guidelines, please contact your supplier.

Quick Start Guide

1. Remove the PushShare Receiving Unit from the packaging and connect the power.
2. Connect the Receiving Unit to your display via HDMI and to the PushShare dongle via USB. If your display is a touch screen, also connect the Receiving Unit to your display via USB.



3. The dongle will automatically pair with the Receiving Unit and begin flashing while pairing. When the flashing stops, the pairing is complete.
4. Insert the USB and HDMI cables provided in the box to the PushShare dongle.



5. Insert the other ends of the USB and HDMI cables into the PC you wish to project to the screen.



6. Press the button on the PushShare dongle to activate the device and begin projecting onto the screen.
7. Once the dongle shows a red light instead of blue, the device is connected and projecting to the screen.



Contents

1.	Introduction	5
1.1	Box Contents	5
1.2	Product Overview/Inputs	5
2.	Mirroring from Mobile Devices	6
2.1	Apple Devices	6
2.2	Android Devices	8
3.	Accessing the Control Panel.....	13
3.1	Settings.....	14
3.1.1	Network Settings.....	14
3.1.2	Pin Code Settings.....	14
3.2	Maintain	15
3.2.1	Factory Reset.....	15
3.2.2	Password	15
3.2.3	Restart	15
4.	FAQs	16

Table of Figures

Figure 1.	Product Overview.....	5
-----------	-----------------------	---

1. Introduction

PushShare allows users to wirelessly mirror their device to a presentation screen at the push of a button. Improve the productivity of your meetings by allowing participants to effortlessly collaborate, without the need for any technical training or software installation. PushShare has universal compatibility with any user device with a HDMI output and is suitable for all spaces, from small huddle rooms to large conference rooms, providing a versatile and hassle-free solution.

The PushShare Receiving Unit can be used to wirelessly mirror from mobile devices to any display or projector with HDMI or VGA. If you want to wirelessly mirror from a PC or laptop you will need to use the PushShare Dongle.

1.1 Box Contents

- 1 x PushShare Receiving Unit
- 2 x Wi-Fi aerial
- 1 x HDMI cable (540mm)
- 1 x Power plug and cable

1.2 Product Overview/Inputs

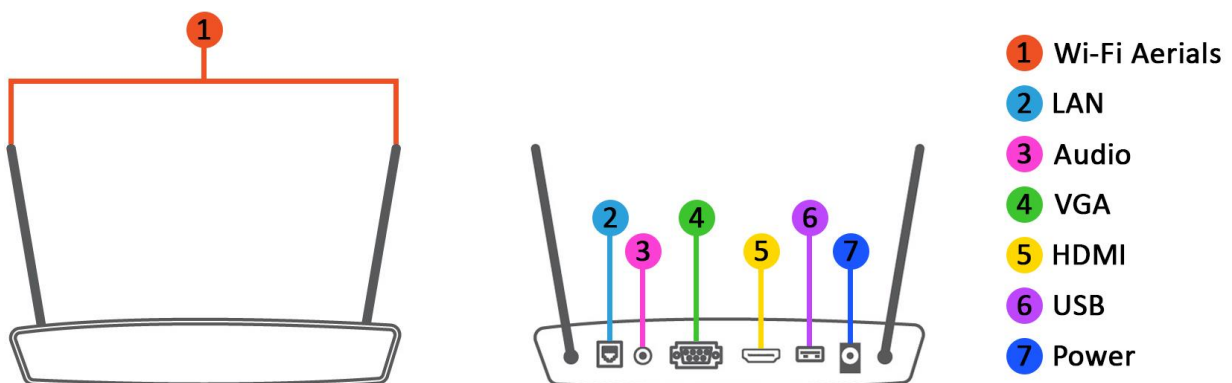
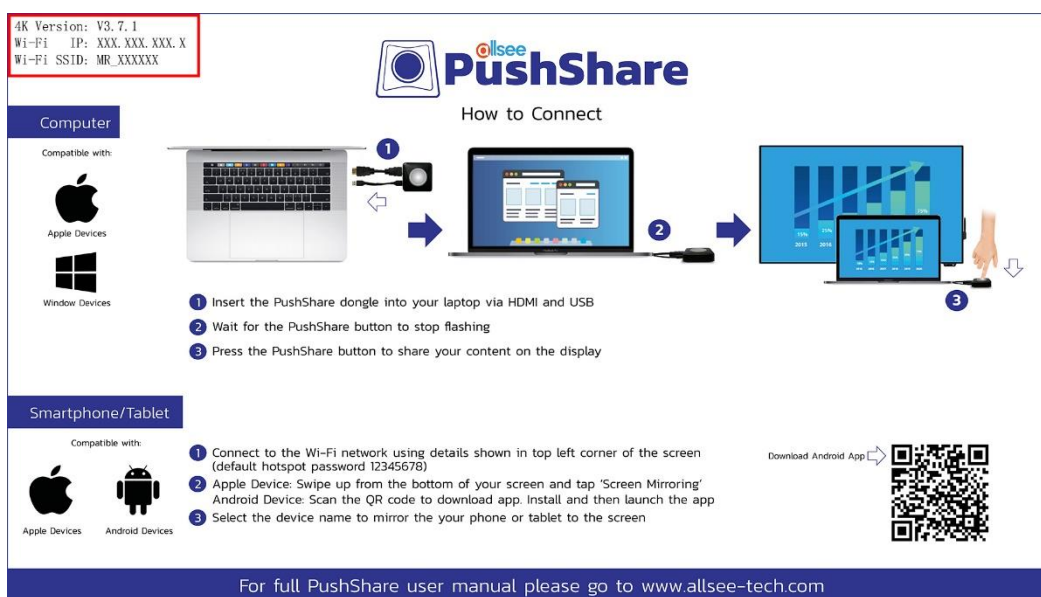


Figure 1. Product Overview

2. Mirroring from Mobile Devices

2.1 Apple Devices

1. From your home screen, go to Settings > Wi-Fi and make sure Wi-Fi is turned on.
2. Select the name of the secure Wi-Fi network you want to join. This can be located in the top right-hand corner of the “How to Connect” screen (see below).




3. Enter the password for the Wi-Fi network listed on the “How to Connect” screen of the PushShare app and then select “Join”. If you can’t select “Join”, the password you have entered is incorrect. The default password is: “12345678”.
4. On your Apple device, swipe up from the bottom of your screen to open Control Centre.

NOTE: Depending on the Apple device, the steps for accessing the Control Centre may be different.

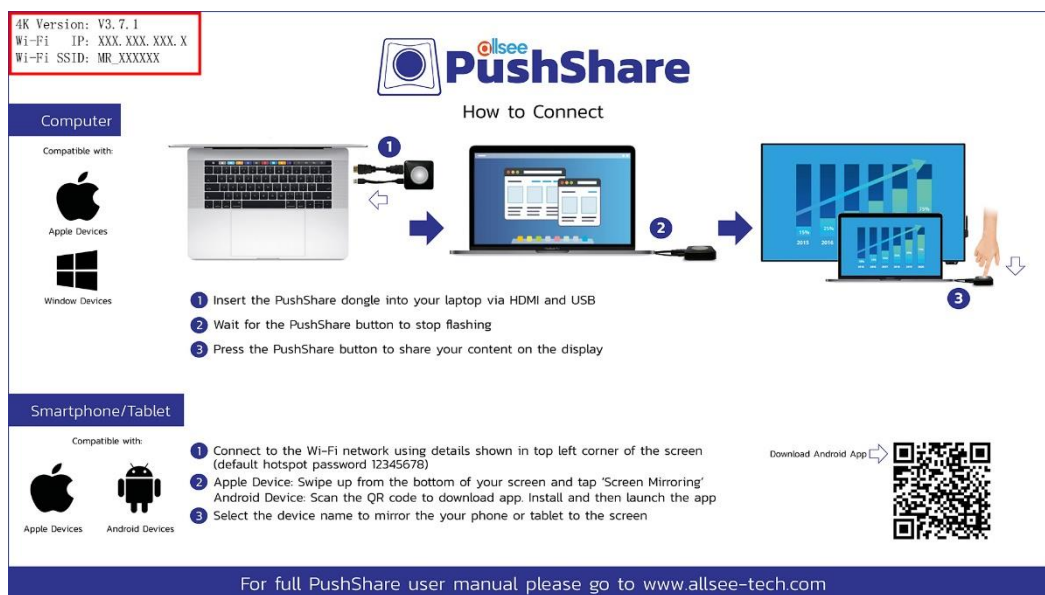
5. Tap the “AirPlay” or “Screen Mirroring” option.



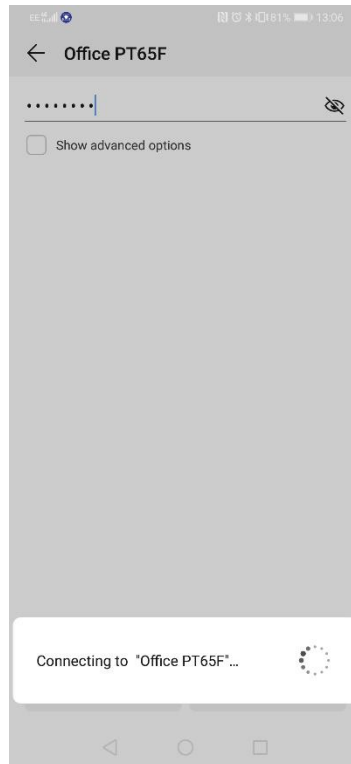
6. Tap “MeetingPad-XXXX ” and the display on your device will now be mirrored on screen.

2.2 Android Devices

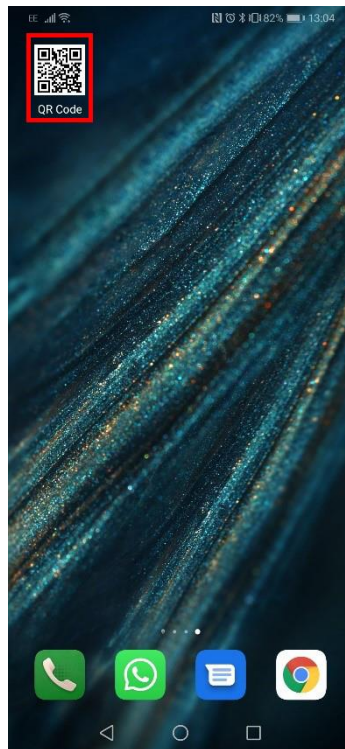
1. From your home screen, go to “Settings > Wireless & Networks > Wi-Fi” and make sure Wi-Fi is turned on.
2. Select the name of the secure Wi-Fi network you want to join. This can be located in the top right-hand corner of the “How to Connect” screen (see below).



3. Enter the password for the Wi-Fi network listed on the “How to Connect” screen of the PushShare app and then select “Join”. If you can’t select “Join”, the password you have entered is incorrect. The default password is: “12345678”.



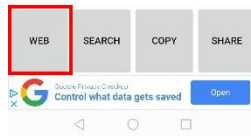
4. On your Android mobile, please download or open a “QR Code Scanner” using the Google play store.



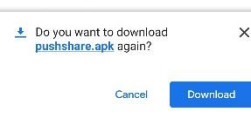
5. Open the “QR Code Scanner” and scan the QR code that is located on the bottom right of the “PushShare” app on the screen.



6. Once the QR Code has been scanned, select “Web”.



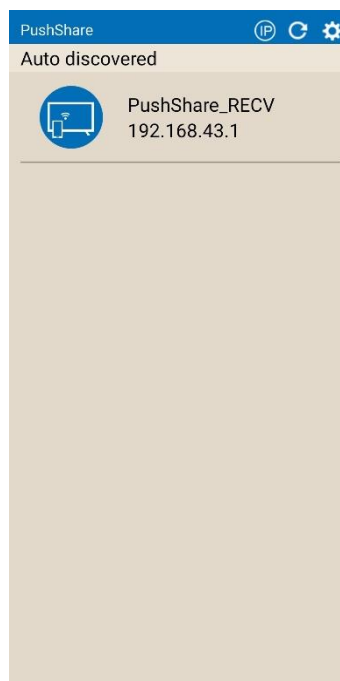
7. Download “pushshare.apk” when the pop up menu appears.



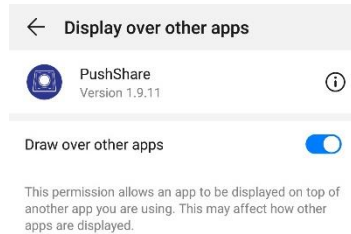
8. Open the newly downloaded “PushShare” APK from the downloads folder on your Android device. Please install this app.



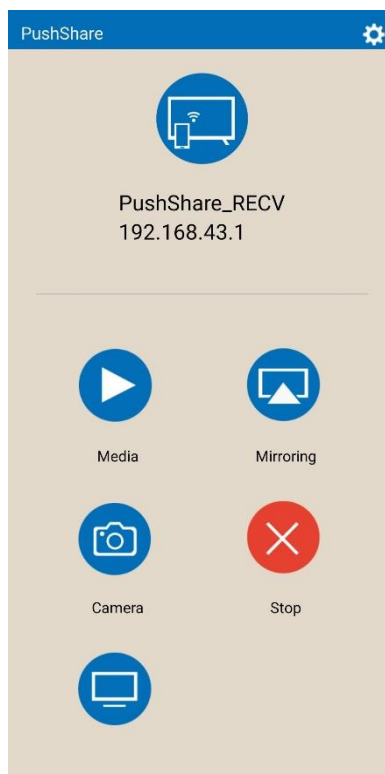
9. Navigate to the newly installed “PushShare” app and open.
10. Select the device you want to mirror to, listed as “PushShare_XXXX” on the app.



11. Give permission to “Draw over other apps” once prompted on your Android device.



12. The Android device is now connected to the screen and you can mirror by selecting the “Mirroring” option.

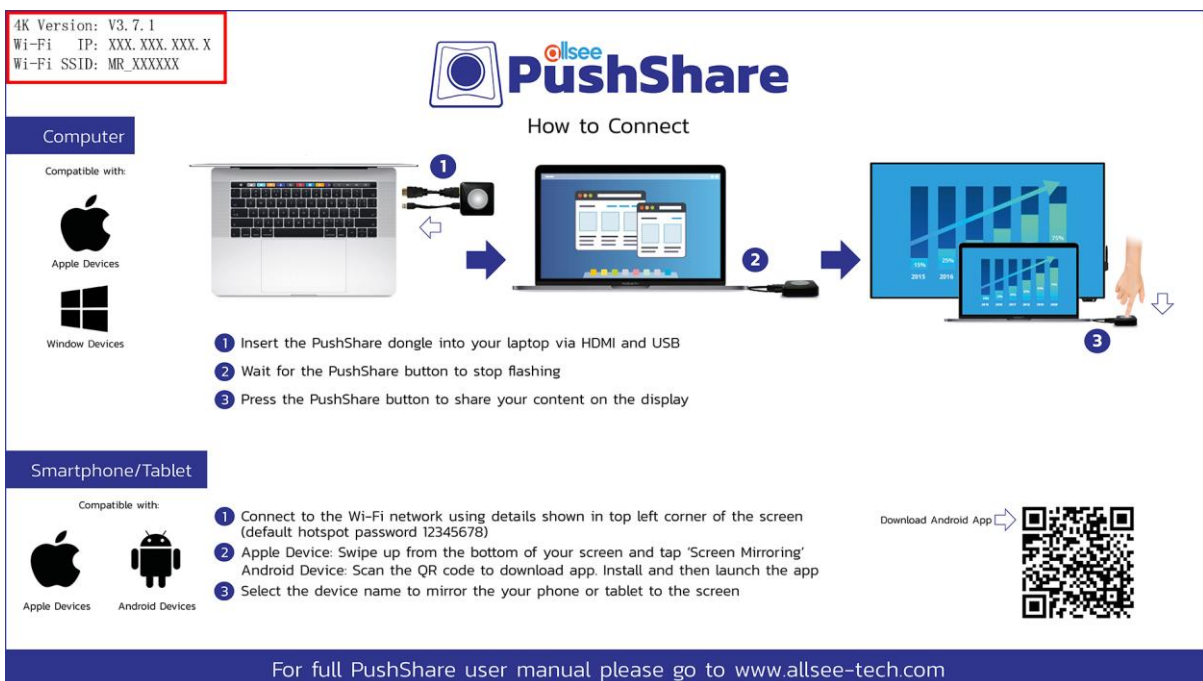


NOTE: If you would like to browse the internet on your device while mirroring your Receiving Unit, will need to be connected to your network via Ethernet cable.

3. Accessing the Control Panel

NOTE: To access the control box for the Receiving Unit, you will need access to a PC or laptop.

1. Connect your Receiving Unit to your presentation screen via HDMI or VGA and power on from the mains.
2. Once the “How to Connect” screen displays, the “Wi-Fi IP” and “Wi-Fi SSID” will be displayed in the top left hand corner (see below).



4K Version: V3.7.1
 Wi-Fi IP: XXX.XXX.XXX.X
 Wi-Fi SSID: MR_XXXXXX

Computer

Compatible with:

Apple Devices

Window Devices

Smartphone/Tablet

Compatible with:

Apple Devices

Android Devices

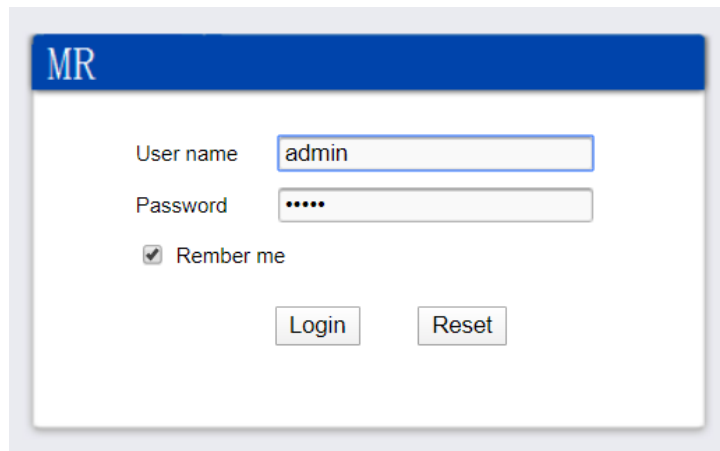
How to Connect

1. Insert the PushShare dongle into your laptop via HDMI and USB
2. Wait for the PushShare button to stop flashing
3. Press the PushShare button to share your content on the display

Download Android App

For full PushShare user manual please go to www.allsee-tech.com

3. Using your PC or laptop, connect to the “Wi-Fi SSID” network using the default password “12345678”.
4. Open your web browser and enter the “Wi-Fi IP” into the address bar, then hit enter.
5. You will now see a login screen. The default username and password are both “admin” (all lowercase characters).



6. Once you have logged in, you will be able to change all of the settings of your Receiving Unit.

NOTE: It is not recommended to change any settings not outlined below without further guidance from the manufacturer.

3.1 Settings

3.1.1 Network Settings

Here you can edit the network name (SSID) and change the password from the default “12345678” to anything you like. You can also change the frequency, channel and signal strength of the Wi-Fi.

3.1.2 Pin Code Settings

If you enable this setting, you will need to enter this pin code when you are attempting to mirror to your Receiving Unit from a mobile device (not using the PushShare dongle). Please make careful note of the pin code for future reference as it cannot be changed.

3.2 Maintain

3.2.1 Factory Reset

If you have changed any settings but would like to revert these back to default, click “Reset” to perform a factory reset.

3.2.2 Password

Here you can change the control panel password from the default “admin” to anything you like.

3.2.3 Restart

This function will sever any connections to your Receiving Unit and restart it back to the “How to Connect” screen.

4. FAQs

4.1 I have connected my PushShare dongle to my device via USB but I cannot get my device to mirror to my presentation screen.

Please connect both the HDMI and USB cables provided from the PushShare dongle to your device.

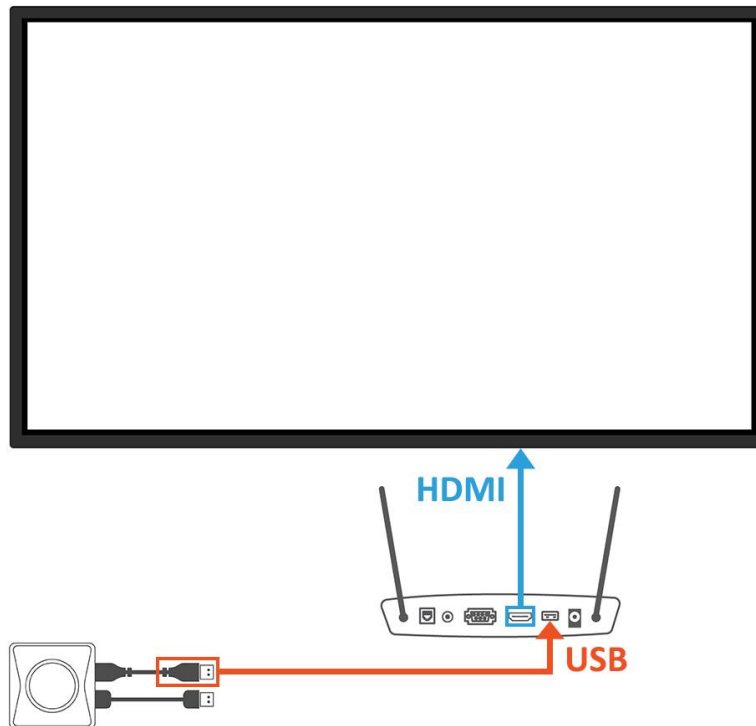


The HDMI cable must be connected as well as the USB cable to send the video and audio signals.

1. Attach the USB and HDMI cable provided in the box to the PushShare dongle.



2. Connect the PushShare dongle to the Receiving Unit via USB, and then connect the Receiving Unit to your display via HDMI (and via USB if your display is a touch screen).



3. Once paired (i.e. when the flashing stops), connect the PushShare dongle to the device you want to mirror.
4. You can then press the button on the PushShare dongle to mirror to the display screen.

4.2 I have connected my PushShare dongle to my device via HDMI but I cannot get my device to mirror to my presentation screen.

Please connect both the HDMI and USB cables provided from the PushShare dongle to your device.

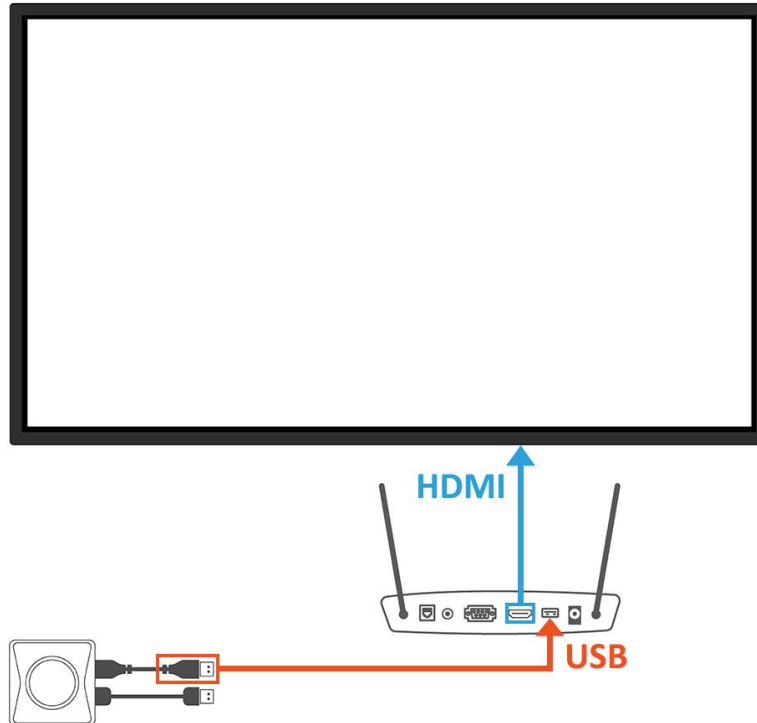


The USB cable must be connected as well as the HDMI cable to provide power to the PushShare dongle.

1. Attach the USB and HDMI cable provided in the box to the PushShare dongle.



2. Connect the PushShare dongle to the Receiving Unit via USB, and then connect the Receiving Unit to your display via HDMI (and via USB if your display is a touch screen).



3. Once paired (i.e. when the flashing stops), connect the PushShare dongle to the device you want to mirror.
4. You can then press the button on the PushShare dongle to mirror to the display screen.

4.3 I have connected my PushShare dongle to my device via HDMI and USB then pushed the button after the flashing has stopped, but my device is still not mirroring my presentation screen.

The PushShare dongle must be paired to your PushShare Receiving Unit. To do this, connect the PushShare dongle to your PushShare Receiving Unit and wait until the dongle's indication light turns red.